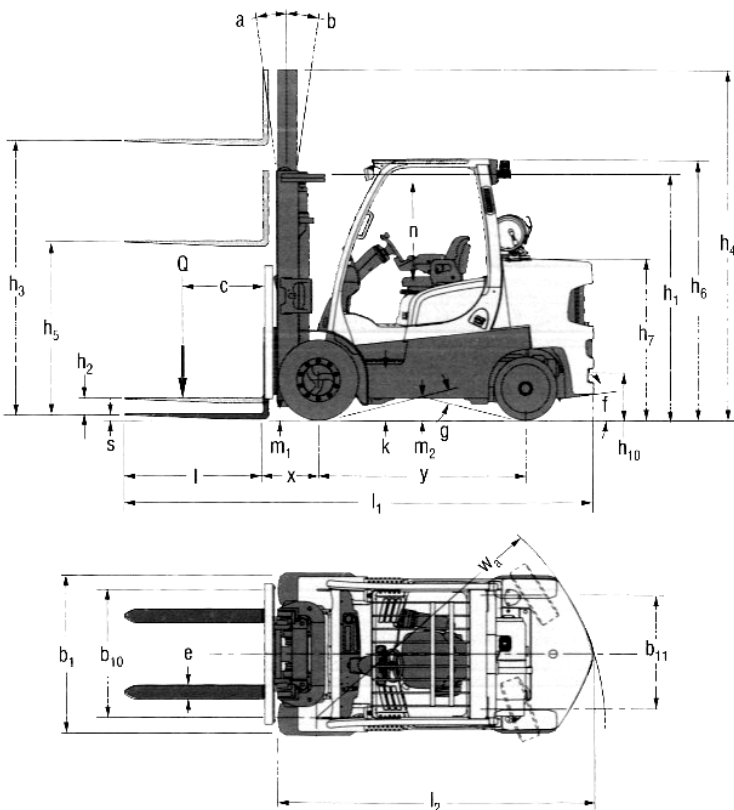


WIDE MAST S7



= Centre of gravity of unladen truck

$Ast = W_a + x + l_6 + a$ (see lines 4.33 & 4.34)

a = Minimum operating clearance

(V.D.I. standard = 200 mm BITA recommendation = 300 mm)

l_6 = Load length

NOTE:

Specifications are affected by the condition of the vehicle and how it is equipped, as well as the nature and condition of the operating area. If these specifications are critical, the proposed application should be discussed with your dealer.

- + Without load backrest
- h_6 subject to +/- 5 mm tolerance
- Full suspension seat in depressed position
- ¶ Bottom of forks
- Add 32 mm with load backrest
- ◆ Stacking aisle width (lines 4.33 & 4.34) are based on the V.D.I. standard calculation as shown on illustration. The British Industrial Truck Association recommends the addition of 100 mm to the total clearance (dimension a) for extra operating margin at the rear of the truck.
- † Gradeability figures (lines 5.7 & 5.8) are provided for comparison of tractive performance, but are not intended to endorse the operation of the vehicle on the stated inclines. Follow instructions in the operating manual regarding operation on inclines.
- ⊠ Variable
- ◇ Measured according to the test cycles and based on the weighting values contained in EN12053
- ☎ Consult your Hyster lift truck dealer

Mast tables:

- ✦ With load backrest
- ▽ Without load backrest

Notice

Care must be exercised when handling elevated loads. When the carriage and/or load is elevated, truck stability is reduced. It is important that mast tilt in either direction be kept to a minimum when loads are elevated. Operators must be trained and adhere to the instructions contained in the Operating Manual.

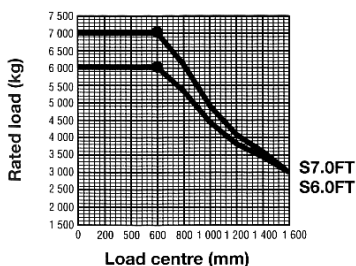
Hyster products are subject to change without notice. Lift trucks illustrated may feature optional equipment.



This truck conforms to the current EU requirements.

Model	S6.0FT	S7.0FT
f	42%	42%
g	24,9°	24,9°
k	531	531
n	1 062	1 062

Rated capacities



Load centre

Distance from front of forks to centre of gravity of load.

Rated load

Based on vertical masts up to 4 700 mm.

NEW S7 SPECS

Spec & Application Survey Report Diesel and Gas Machines



Business Name:
 Briggs Survey Person:
 Site Address:

Date:
 Briggs No:
 Site Phone No:
 Post Code:

Load Characteristics

Max Load Weight: Kgs
 At Max Load Centre: MM
 Load Width: MM
 Load Height: MM
 Load Length: MM
 Material:

Lift Characteristics

Maximum Lift Height: MM
 Top beam to roof: MM
 Depth of racking: MM
 Top Beam of racking: MM
 Drive In racking dims:
 Tilts, Degrees F/B:
 Sideshift, Y/N:

Minimum Heights

Roof: MM
 Mezzanine: MM
 Door: MM
 Other: MM

Minimum Widths

Main Aisle: MM
 Stacking Aisle: MM
 Door: MM
 Other: MM
 Fuel: Disel
 Pallet type/size: LPG

FUTURE BUSINESS DEVELOPMENT:

Does the customer have any plans to update or alter any racking, storage spaces, doors or building's in the near future?

RECOMMENDED SPECIFICATION FOR SITE:

Based on the information supplied above by the customer.

Machine Make	<input type="text" value="Hyster"/>	Model	<input type="text" value="S7.0FT8"/>	Quantity	<input type="text" value="1"/>
Mast Type	Standard <input type="text"/>	FFL Duplex	<input type="text"/>	FFTL Triplex	<input type="text" value="X"/>
Mast Size	Lift Height <input type="text" value="4700mm"/>	Lowered Ht	<input type="text" value="527mm"/>	Free Lift	<input type="text" value="1295mm"/>
Fork Size	Length <input type="text" value="2400mm"/>	Width	<input type="text" value="150mm"/>	Thickness	<input type="text" value="60mm"/>
Hydraulics	Manual <input type="text" value="X"/>	Fingertip	<input type="text"/>	Quick Release	<input type="text"/>
	No. of Hyds <input type="text" value="3"/>				
Lighting	Road Lights <input type="text" value="N/A"/>	Flood Lights	<input type="text"/>	Other	<input type="text"/>
Tyre Type	Solid <input type="text" value="X"/>	Pneumatic	<input type="text"/>	Other	<input type="text"/>
Warning	Back-up Alarm <input type="text" value="Normal"/>	White/Normal	Beacon <input type="text" value="Yes"/>	Flash/Rotate	Other <input type="text"/>
Flameproofing	<input type="text"/>				
Type Of Cab	Full Steel <input type="text"/>	Half, PVC	<input type="text"/>	Perspex Cover	<input type="text"/>
Use Of Public Highways	Y/N <input type="text" value="N"/>				
Is Training required ?	Y/N <input type="text" value="N"/>	Site Speed	<input type="text"/>		
Attachments	Sideshift <input type="text"/>	Integral/Hook-on	Other	<input type="text"/>	
		Material Handling	<input type="text"/>		